

24-Port 10/100/1000BASE-T Gigabit Ethernet Switch



Cost-effective Gigabit Solution for Enterprise Backbone and Data Center Networking

PLANET GSW-2401 Gigabit Ethernet Switch provides 24 RJ45 10/100/1000Mbps ports for high-speed network connectivity. It can automatically identify and determine the correct transmission speed and half/full duplex mode of the attached devices with its 24 Gigabit ports that support 10K jumbo frame feature. Therefore, the GSW-2401 can handle an extremely large amount of data transmission in a secure topology linking to a backbone or high-power servers.

High Performance

The GSW-2401 provides a high-performance switch architecture that is capable of providing the non-blocking switch fabric and wire-speed throughput as high as 48Gbps, which greatly simplifies the tasks of upgrading the LAN for catering to increasing bandwidth demands. Besides, the Flow Control function of the GSW-2401 enables routers and servers to directly connect to the Switch for fast and reliable data transfer.

All the RJ45 copper interfaces in the GSW-2401 support 10/100/1000Mbps auto-negotiation for optimal speed detection through RJ45 Category 6, 5 or 5e cables. It also supports standard for auto-MDI/MDI-X that can detect the type of connection to any Ethernet device without requiring special straight or crossover cables.

Excellent Traffic Transmission

The GSW-2401 supports Store-and-Forward forwarding scheme to ensure low latency and high data integrity, which eliminates unnecessary traffic and relieves congestion on critical network paths. With an intelligent address recognition algorithm, the GSW-2401 recognizes up to 8K different MAC addresses. The high data throughput and 48Gbps internal switching fabric make it ideal for most Gigabit network environments, especially helpful for upgrading network to a Gigabit environment.

Fanless Design

With its good ventilation design, the GSW-2401 is able to operate all along without a fan, thus reducing substantial power consumption and creating a noiseless environment. The GSW-2401 is definitely the best choice for any working environment without affecting its performance.



Physical Port

- 24 10/100/1000BASE-T Gigabit Ethernet ports
- Supports auto MDI/MDI-X function

Layer 2 Features

- Complies with IEEE 802.3, 10BASE-T, IEEE 802.3u 100BASE-TX, IEEE 802.3ab 1000BASE-T Ethernet standards
- Features Store-and-Forward mode with wire-speed filtering and forwarding rates
- Integrated address look-up engine, supporting 8K absolute MAC addresses
- 10K jumbo packet support
- Power Saving ability for Green networking
- IEEE 802.1Q VLAN packet transparent support
- IEEE 802.3x flow control for full duplex operation and backpressure for half duplex operation
- Hardware based 10/100BASE-TX, half/full duplex and 1000BASE-T full duplex mode, flow control, and auto-negotiation
- Automatic address learning and address aging
- Supports CSMA/CD protocol

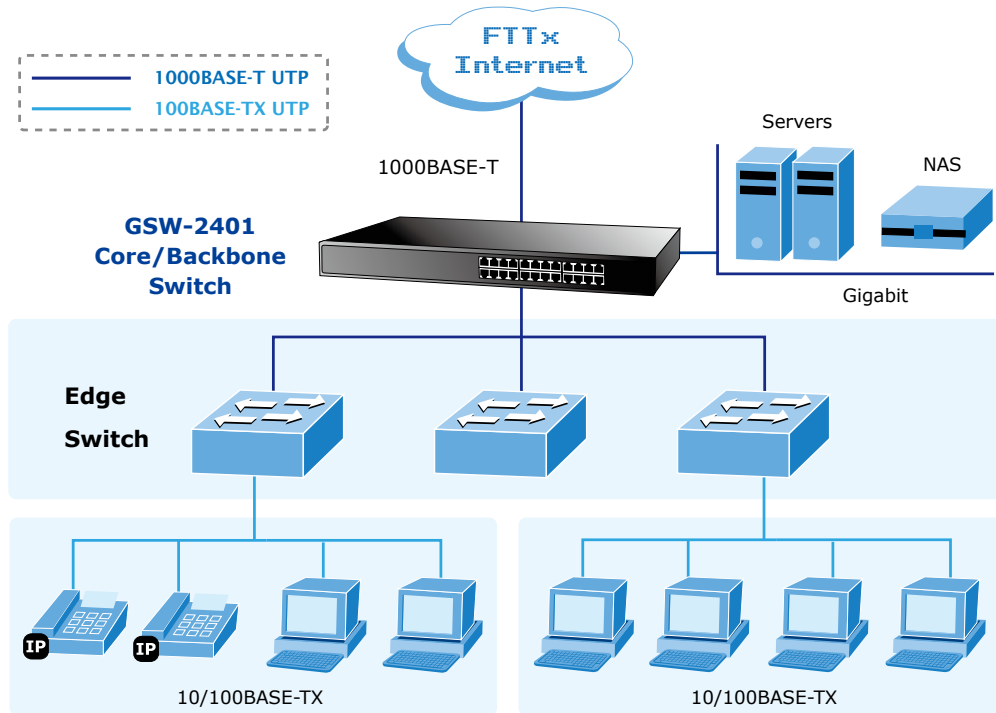
Hardware Features

- 100~240V AC, 0.6A, 50~60Hz universal power input
- FCC, CE Class A compliant

Applications

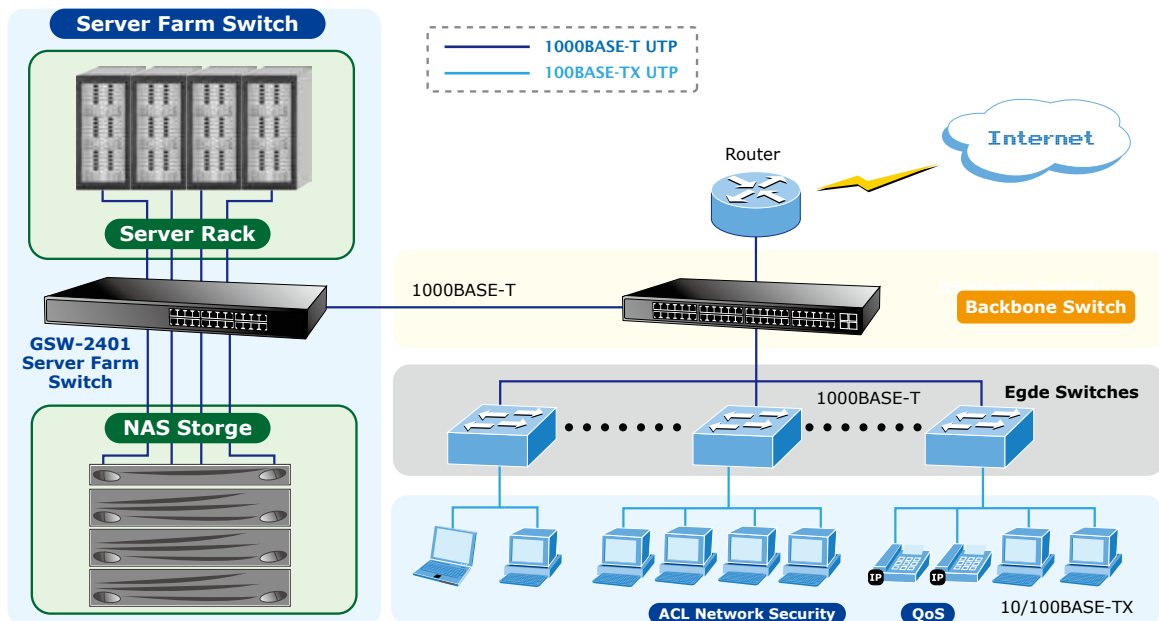
Backbone Switch

With up to 48 Gigabits per second of non-blocking switch fabric, the GSW-2401 can easily provide high bandwidth for both today's and future requirements.



Server Farm Switch

Providing 24 Gigabit Ethernet ports, the GSW-2401 is ideal to be used as a server farm switch connecting to your servers and powerful desktops.



Specifications

| | |
|-------------------------------------|---|
| Product | GSW-2401 |
| Hardware Specifications | |
| Hardware Version | Version 7 |
| 10/100/1000BASE-T MDI/MDIX Ports | 24 |
| Throughput (packet per second) | 35.7Mpps |
| Switch Fabric | 48Gbps/non-blocking |
| Weight | 1.9kg |
| Power Consumption/Dissipation | 13.5 watts/46 BTU |
| Power Requirements | 100-240V AC, 0.6A, 50/60Hz |
| Dimensions (W x D x H) | 440 x 180 x 44 mm, 1U height |
| Switch Processing Scheme | Store-and-Forward |
| Address Table | 8K entries |
| Jumbo Packet Size | 10K |
| Flow Control | Back pressure for half duplex, IEEE 802.3x pause frame for full duplex |
| Standards Conformance | |
| Regulatory Compliance | FCC Part 15 Class A, CE |
| Standard Compliance | IEEE 802.3 (Ethernet) IEEE 802.3u (Fast Ethernet) IEEE 802.3ab (Gigabit Ethernet) IEEE 802.3x (Full-duplex flow control) |
| Environmental Specifications | |
| Temperature | Operating: 0~50 degrees C Storage: -10~70 degrees C |
| Humidity | Operating: 5~95% Storage: 5~95% (non-condensing) |

* The specifications are for the GSW-2401 hardware version 7 only.

Ordering Information

| | |
|----------|---|
| GSW-2401 | 24-port 10/100/1000BASE-T Gigabit Ethernet Switch |
|----------|---|